

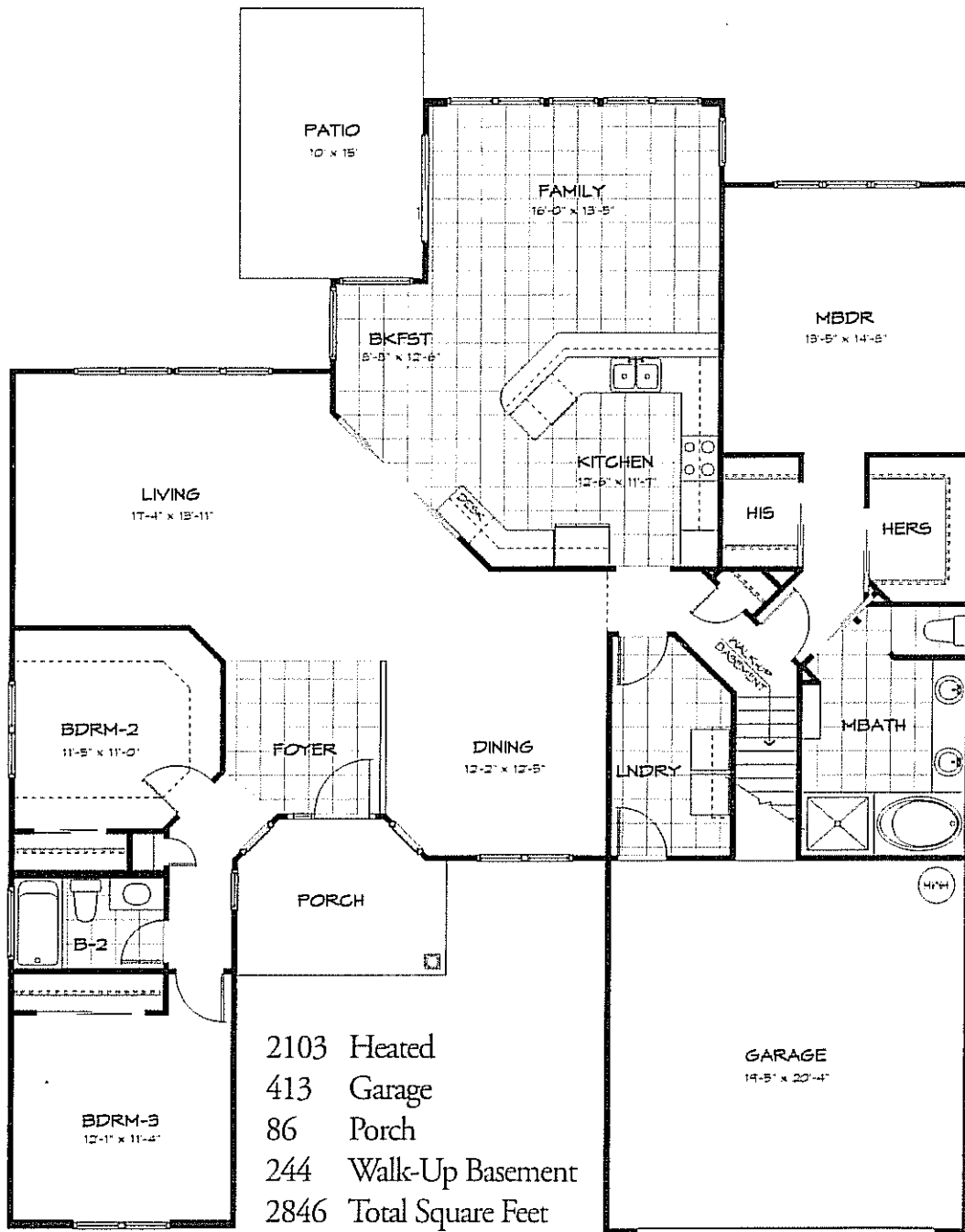
8/25/08

**SAGO PLANTATION  
HOME PRICE LIST**

<u>PLAN</u>	<u>SQ. FT.</u>	<u>ELEVATION</u>	<u>PRICE</u>
<hr/>			
<b><u>BROOKFIELD</u></b>	2103		
Garage	413		
Walk up Basement	244		
Entry	<u>86</u>	<u>A</u>	<u>\$271,400.00</u>
Total	2846	<u>B</u>	<u>\$274,400.00</u>
<hr/>			
<b><u>GLYNWOOD</u></b>	2179		
Garage	427		
Walk up Basement	239		
Entry	<u>40</u>	<u>A</u>	<u>\$276,400.00</u>
Total	2885	<u>B</u>	<u>\$279,400.00</u>
<hr/>			
<b><u>HIGHLANDER</u></b>	2144		
Garage	499		
Walk up Basement	262		
Entry	<u>31</u>	<u>A</u>	<u>\$277,400.00</u>
Total	2936	<u>B</u>	<u>\$280,400.00</u>
<hr/>			
<b><u>BROOKHAVEN</u></b>	2253		
Garage	438		
Walk up Basement	242		
Entry	<u>54</u>	<u>A</u>	<u>\$281,400.00</u>
Total	2987	<u>B</u>	<u>\$285,400.00</u>
<hr/>			
<b><u>SOMERSET</u></b>	2471		
Garage	400		
Walk up Basement	249		
Entry/ Rear Stoop	<u>162</u>	<u>A</u>	<u>\$299,900.00</u>
Total	3282	<u>B</u>	<u>\$302,900.00</u>
<hr/>			
<b><u>Westfield</u></b>	2569		
Garage	399		
Walk up Basement	228		
Entry	<u>38</u>	<u>A</u>	<u>\$304,900.00</u>
Total	3234	<u>B</u>	<u>\$307,900.00</u>

**Note: House Prices Excludes Lot**

# Brookfield

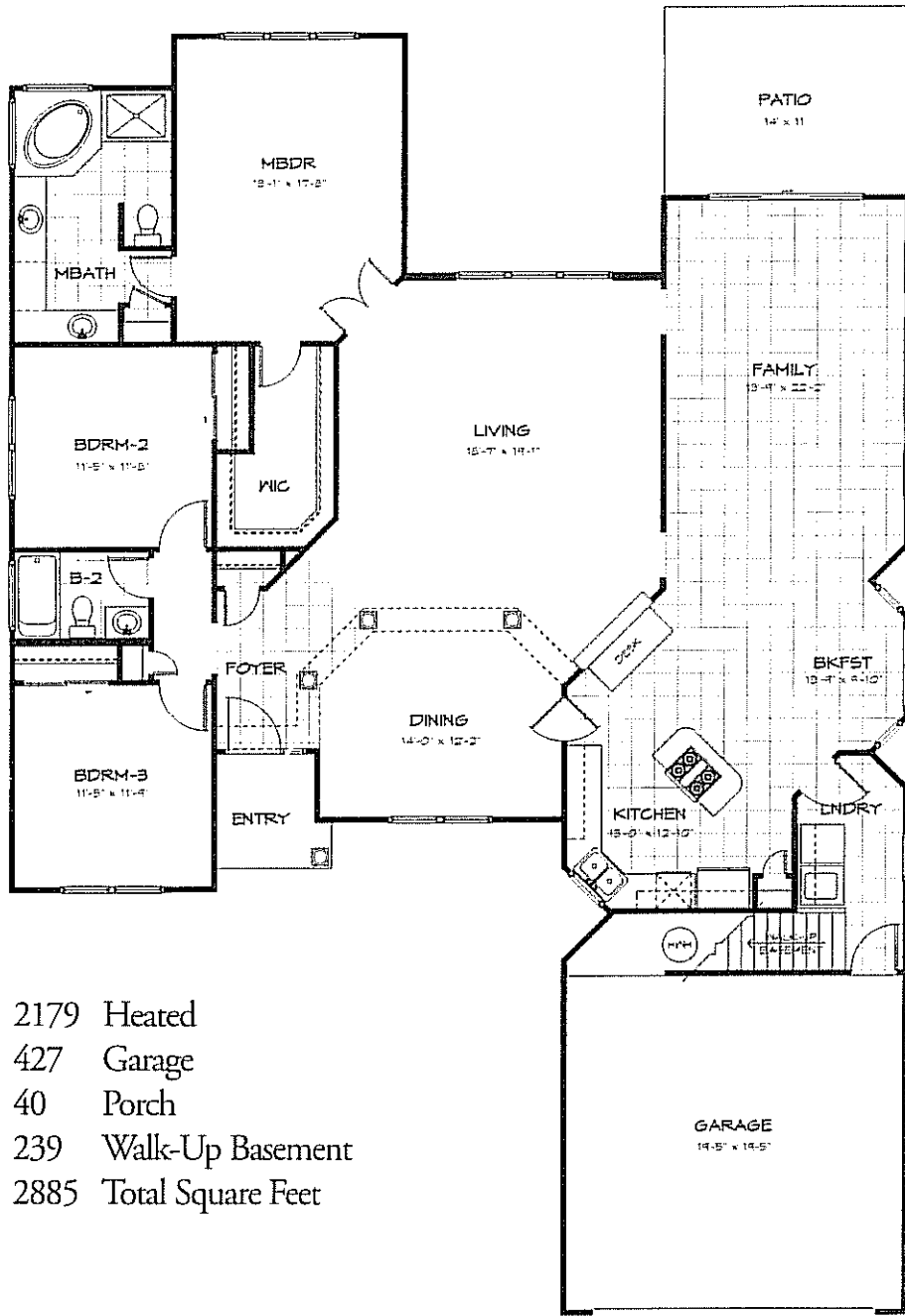


Construction By  
**SunBelt Homes**  
 OF MYRTLE BEACH, INC.  
 843-449-9406

All features, specifications, options and prices are subject to change without notice.  
 Willow Bay of Prince Creek option list attached for your selection of  
 available options and upgrades.

  
**LEGENDS**  
 REAL ESTATE  
 843-286-5165  
 800-503-9901

# Glynwood



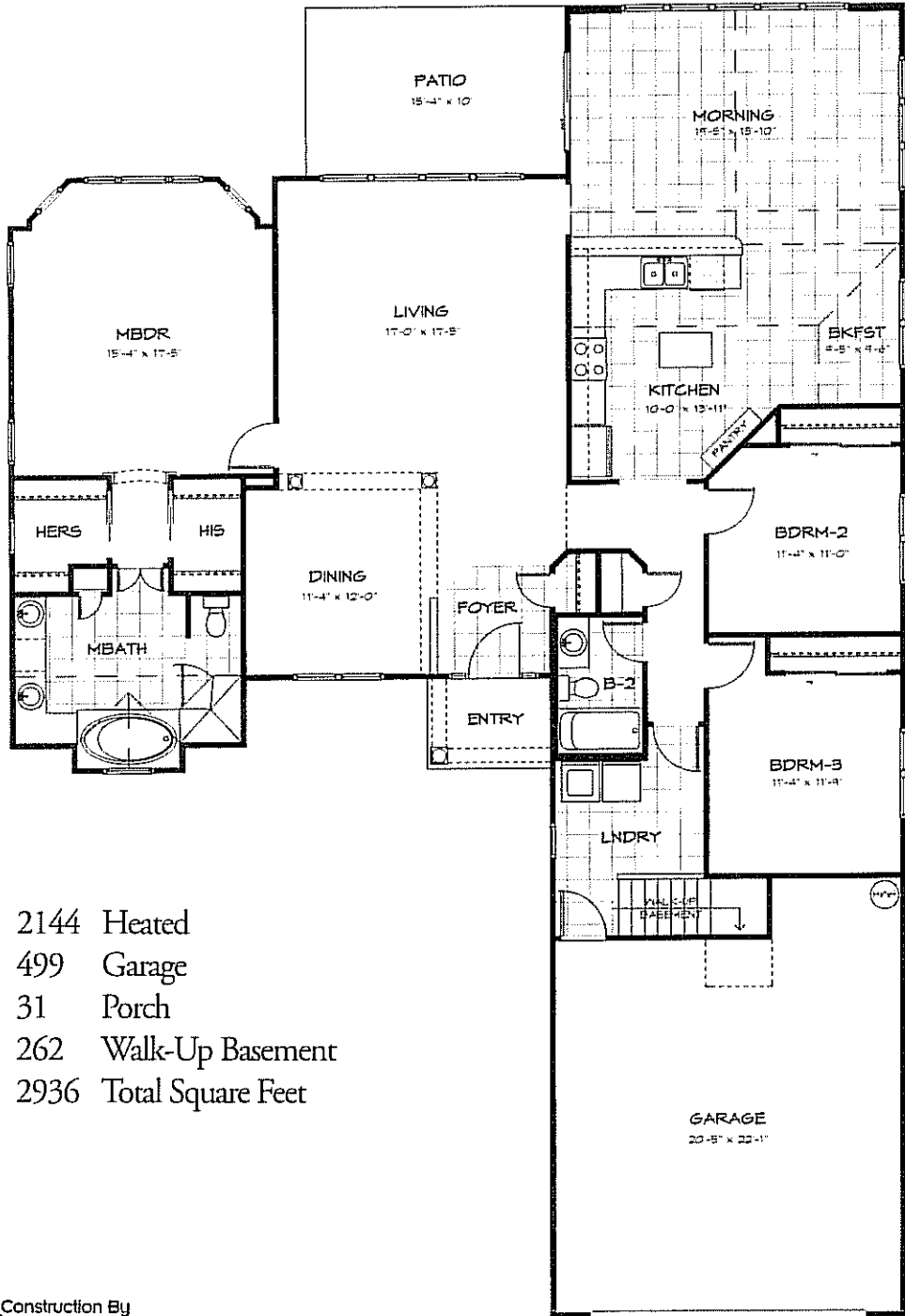
2179 Heated  
 427 Garage  
 40 Porch  
 239 Walk-Up Basement  
 2885 Total Square Feet

Construction By  
**SunBelt Homes**  
 OF MYRTLE BEACH, INC.  
 843-449-9406

All features, specifications, options and prices are subject to change without notice.  
 Willow Bay of Prince Creek option list attached for your selection of  
 available options and upgrades.

**LEGENDS**  
 REAL ESTATE  
 843-286-5165  
 800-503-9901

# Highlander



- 2144 Heated
- 499 Garage
- 31 Porch
- 262 Walk-Up Basement
- 2936 Total Square Feet

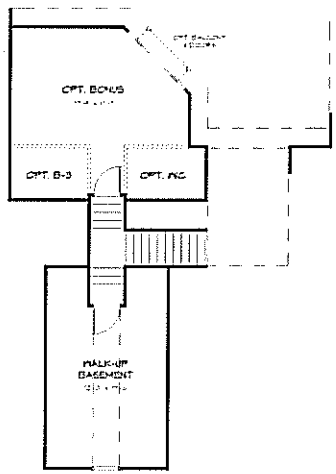
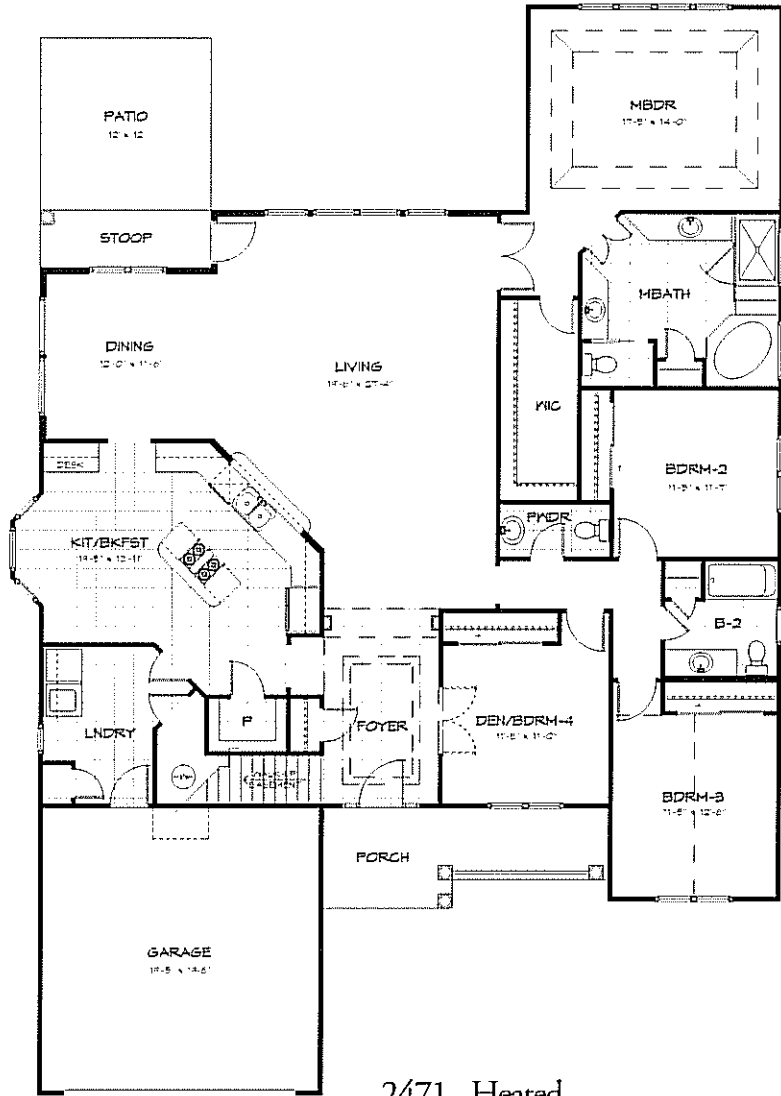
Construction By  
**SunBelt Homes**  
 OF MYRTLE BEACH, INC.  
 843-449-9406

All features, specifications, options and prices are subject to change without notice.  
 Willow Bay of Prince Creek option list attached for your selection of  
 available options and upgrades.

**LEGENDS**  
 REAL ESTATE  
 843-286-5165  
 800-503-9901



# Pomerset



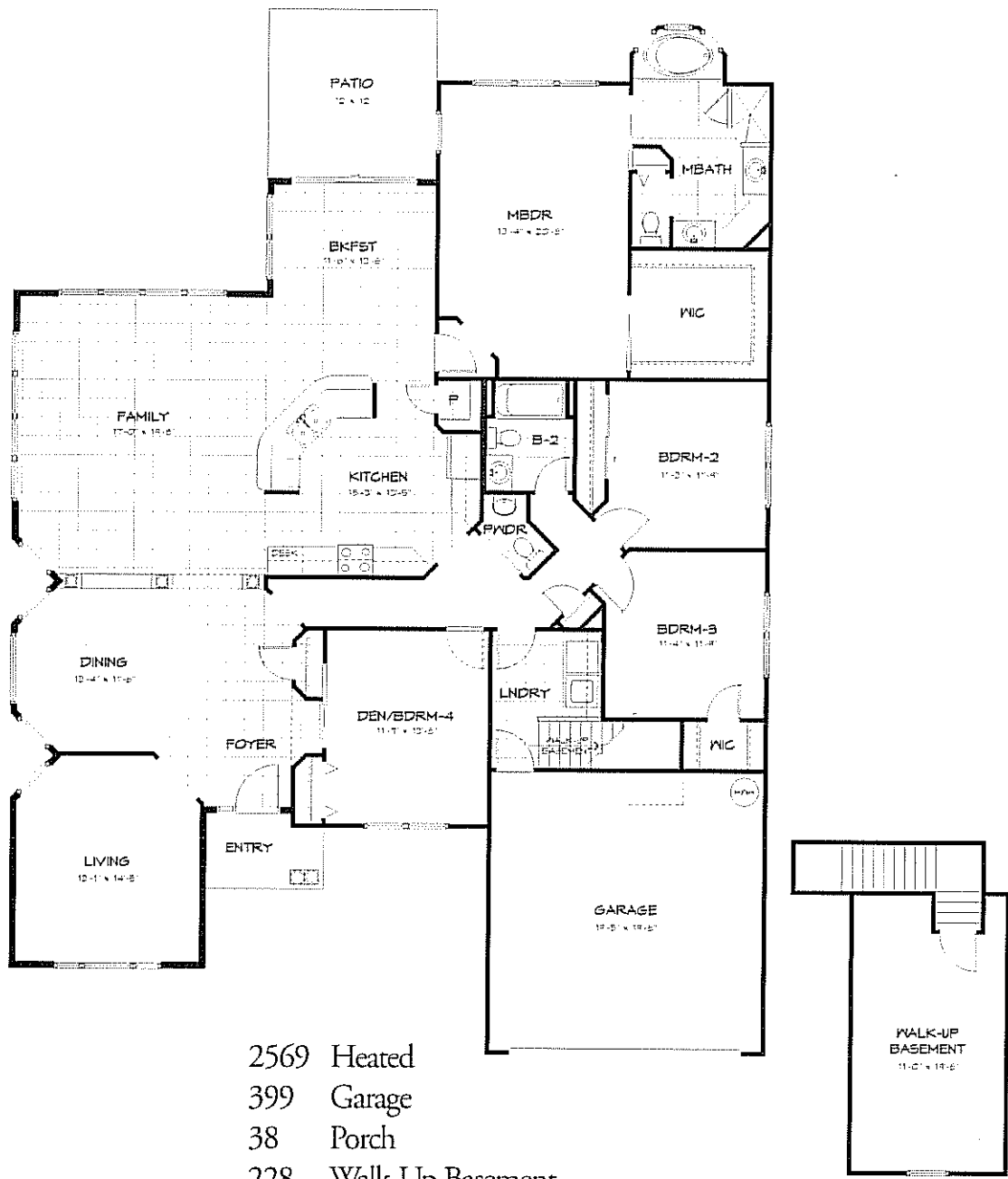
- 2471 Heated
- 400 Garage
- 162 Porch/Rear Stoop
- 249 Walk-Up Basement
- 3282 Total Square Feet

Construction By  
**SunBelt Homes**  
 OF MYRTLE BEACH, INC.  
 843-449-9406

All features, specifications, options and prices are subject to change without notice.  
 Willow Bay of Prince Creek option list attached for your selection of  
 available options and upgrades.

**LEGENDS**  
 REAL ESTATE  
 843-286-5165  
 800-503-9901

# Westfield



2569 Heated  
 399 Garage  
 38 Porch  
 228 Walk-Up Basement  
 3234 Total Square Feet

Construction By  
**SunBelt Homes**  
 OF MYRTLE BEACH, INC.  
 843-449-9406

All features, specifications, options and prices are subject to change without notice.  
 Willow Bay of Prince Creek option list attached for your selection of  
 available options and upgrades.

**LEGENDS**  
 REAL ESTATE  
 843-286-5165  
 800-503-9901